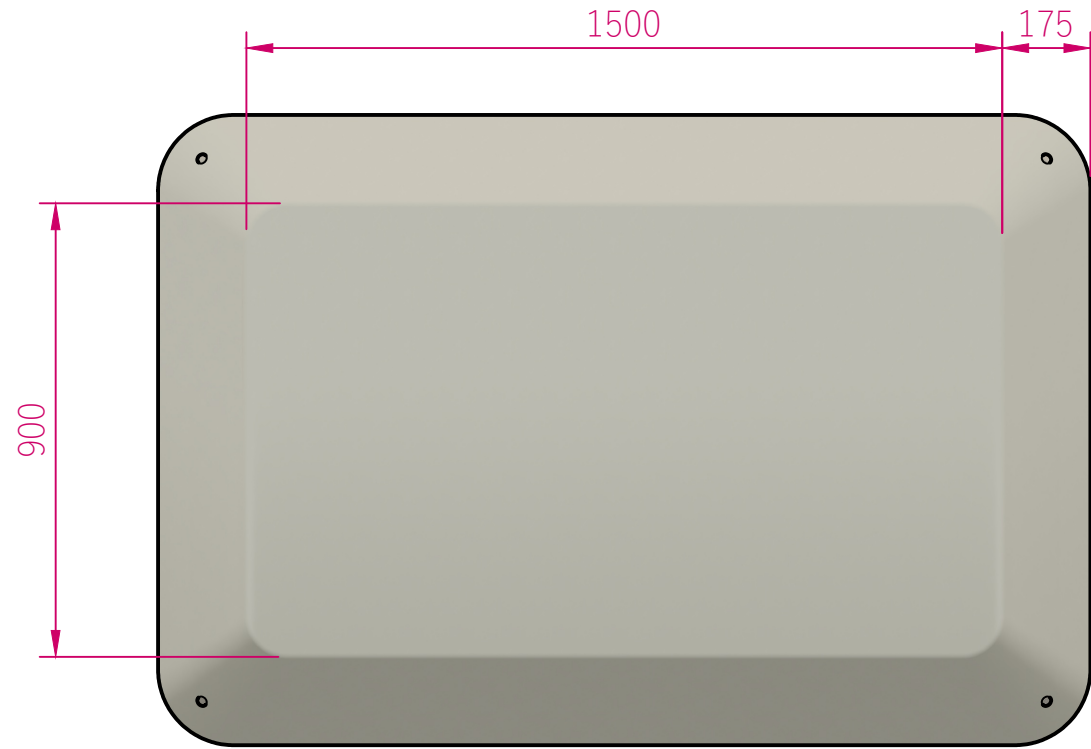


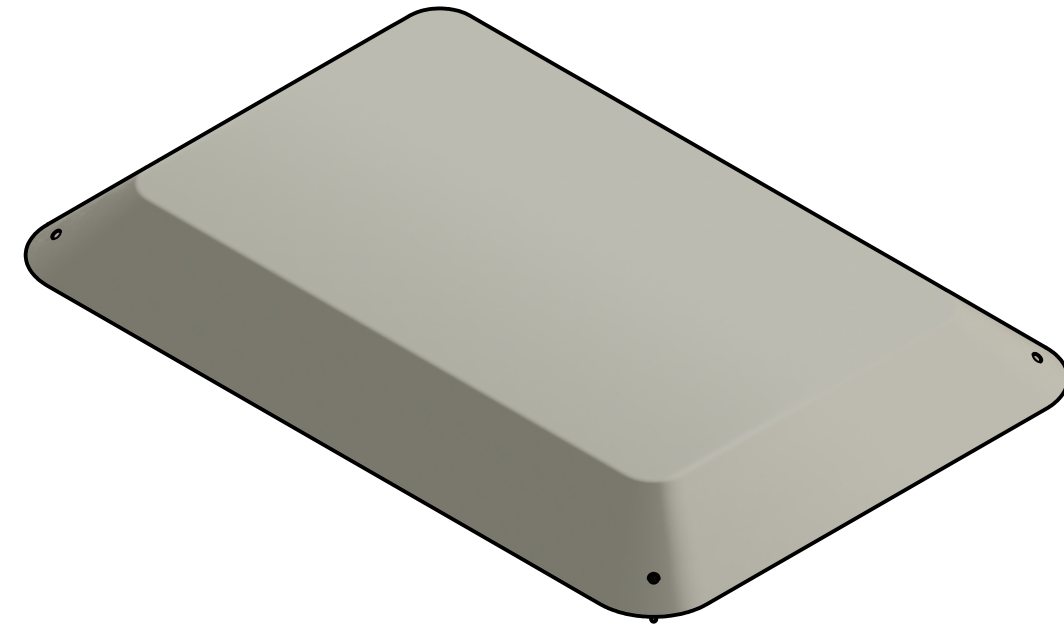
Items Supplied for this Installation			
Item ID	Item Name	Size	Quantity
1	Play Pod Rectangle	1500mm x 900mm	1
2	Steel Pin	300mm Long	4

NOTE:

1. Woodchip to be cleared from installation area.
2. All rubber play pods to be installed on flat surfaces
3. Underside of the play pod **MUST** be always supported by the flat surface.
4. 4x Steel pins (1x each corner) to be installed 50mm from bottom of play pod, into compacted soil / hard surface.



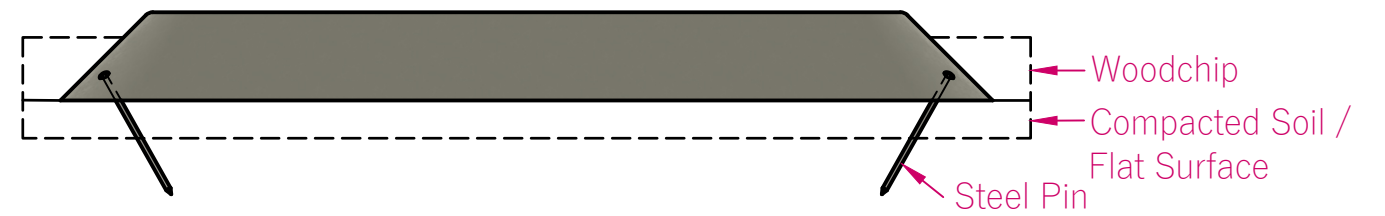
Plan
Scale 1:15



3D View
Scale: NTS



Elevation
Scale 1:15



Elevation
Scale 1:15

Volume = 0.315m³
 Surface Area (Excluding Base Area) = 2.668m²
 Base Area = 2.296m²



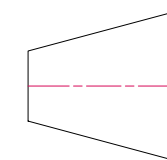
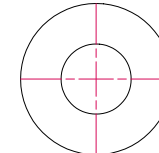
Playspace Design and Build

PROJECT : **GENERIC**
 PRODUCT : **POUR 'N' PLAY PLAY-POD RECTANGLE MR02A**

DRAWN BY : D CROUSE
 CHECKED BY : M WILLIAMS
 REVISION :
 DATE : 13/08/2024
 MADE BY : G RATMIROFF
 QA BY : CREO

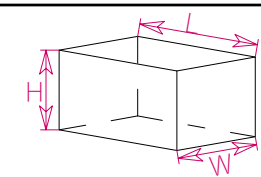
SPECIFICATIONS :
 DESIGN STANDARD : NZS 5828:2015
 DESIGN LIFE : 25
 IMPORTANCE LEVEL : N/A
 WIND ZONE (NZS 1170.2) : N/A
 LENGTH UNIT : mm

PROJECTION



FREIGHT

L = 1850mm
 W = 1250mm
 H = 175mm
 kg = 76kg



DEPARTMENT

INSTALL

DRAWING No. **I1**

SHEET No. **1/1**