

Product Name	Spaceship with Floor
Product Number	RC-2100-F
Size -- Diameter	3.30 m / 10' 10"
Size -- Height	3.85 m / 12' 8"
Shipping Weight	905 kg / 1995.2 lb
Shipping Volume	3.60 m ³ / 127.1 ft ³
Foundations	1
Concrete Volume	No Concrete Required

	ASTM F-1487	CSA Z614	EN 1176
Ages	5 years - 12 years	5 years - 12 years	6 years - 12 years
Safety Zone - Length	7.96 m / 26' 2"	7.96 m / 26' 2"	7.30 m / 23' 11"
Fall Height	2.81 m / 9' 3"	2.81 m / 9' 3"	2.81 m / 9' 3"
Capacity	35	35	35

*Note: Concrete must be minimum 3500 PSI / 25MPa

MAIN SUPPORT POST

This inner support post provides support and stability to the rotational system. This will be constructed of 5 1/2" (139.8mm) steel tubing finished with polyester powder coating, mounted to a reinforced steel base with braces.

ROTATIONAL POST

This outer support post provides the anchoring point for climbing nets and allows the unit to rotate as one. This will be constructed from 6 5/8" (168mm) OD schedule 10 galvanized steel pipe finished with polyester powder coating. The top will be finished with a 1/4" (9mm) thick top plate. Integrated climbing net connection points will be included on the top plate and along the rotational support post as required. Integrated connection points for the deck will also be provided as required.

ROTAION

The Rotaional Post will rotate along with all other parts of the play equipment in a way that prevents clothing entanglements or pinching.

HORIZONATL RINGS

These will be 3" (75mm) steel tubing finished with polyester powder coating. Rings will include integrated climbing net connections points as required.

20MM ROPE

These will be 20 mm diameter polyamide (nylon) rope cable with UV protection and fire retardant solution that is manufactured in house by Ropecamp. Each rope consists of 6 strands each containing 24 galvanized steel reinforcing wires within a polyamide (nylon) braid, wrapped around a solid polyamide (nylon) core for a total of 144 galvanized steel reinforcing strands. Rope shall achieve a Class 7-8 Colourfastness rating.

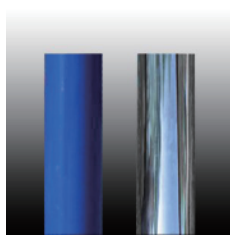
NET CONNECTIONS

Each location where the climbing nets meet the ring or post will have a one-piece stainless steel junction sleeve compressed onto the rope and affixed to the post or ring connector with a bolt and nut.

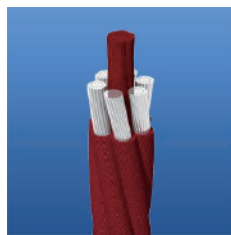
BALL KNOTS	This will be a one-piece compressed aluminum ball, compressed in place with 150,000 pounds force (667KN) to prevent the connection from moving and causing premature cable wear.
BASIC FASTENERS	All fasteners for component attachments are stainless steel.
BEARINGS	This will be maintenance-free self-lubricating nylon, sealed and integrated into the central post, leaving no apparent mechanism.
DECKING	This will be constructed of custom cut 3/16" (5mm) thick punched steel decking with 2" (50mm) angle frame, 3/16" (5mm) thick, welded perpendicular to the deck surface for support. Deck sections are dipped in a phthalate-free PVC coating.
FOOT BASE	This will be 4' x 4' (1220mm x 1220mm) galvanized steel plates, 3/16" (5mm) thick, attached to the support posts with 2" x 2" (50mm x 50mm) galvanized angle steel braces and buried under 4' 6" (1370mm) of fill mass for stability.
INSTALLATION	This should be installed only by licensed playground installer, trained and certified on the relevant playground standards in place in the region of installation, e.g, NPSI, CPSI or similar certified.
NO-ENCROACHMENT ZONE	Where required, this will be an obstacle-free zone that does not necessarily meet the requirements of the protective surfacing zone. See applicable standard for more information.
COMPLIANT WITH	CAN/CSA-Z6 14-07 ASTM F-1487-11 EN-1176 CPSC Handbook for Public Playground Safety



† Where proper surfacing is used, this product meets the ADAAG guidelines for accessibility, allowing the same play possibilities for people of all abilities.



Support Posts



Climbing Net - 20mm



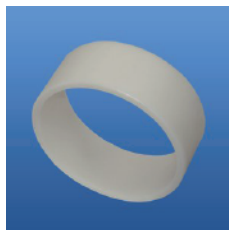
Net Connector



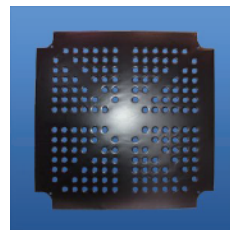
Ball Knot



Top Bearing



Bottom Bearing



PVC Dipped Decking